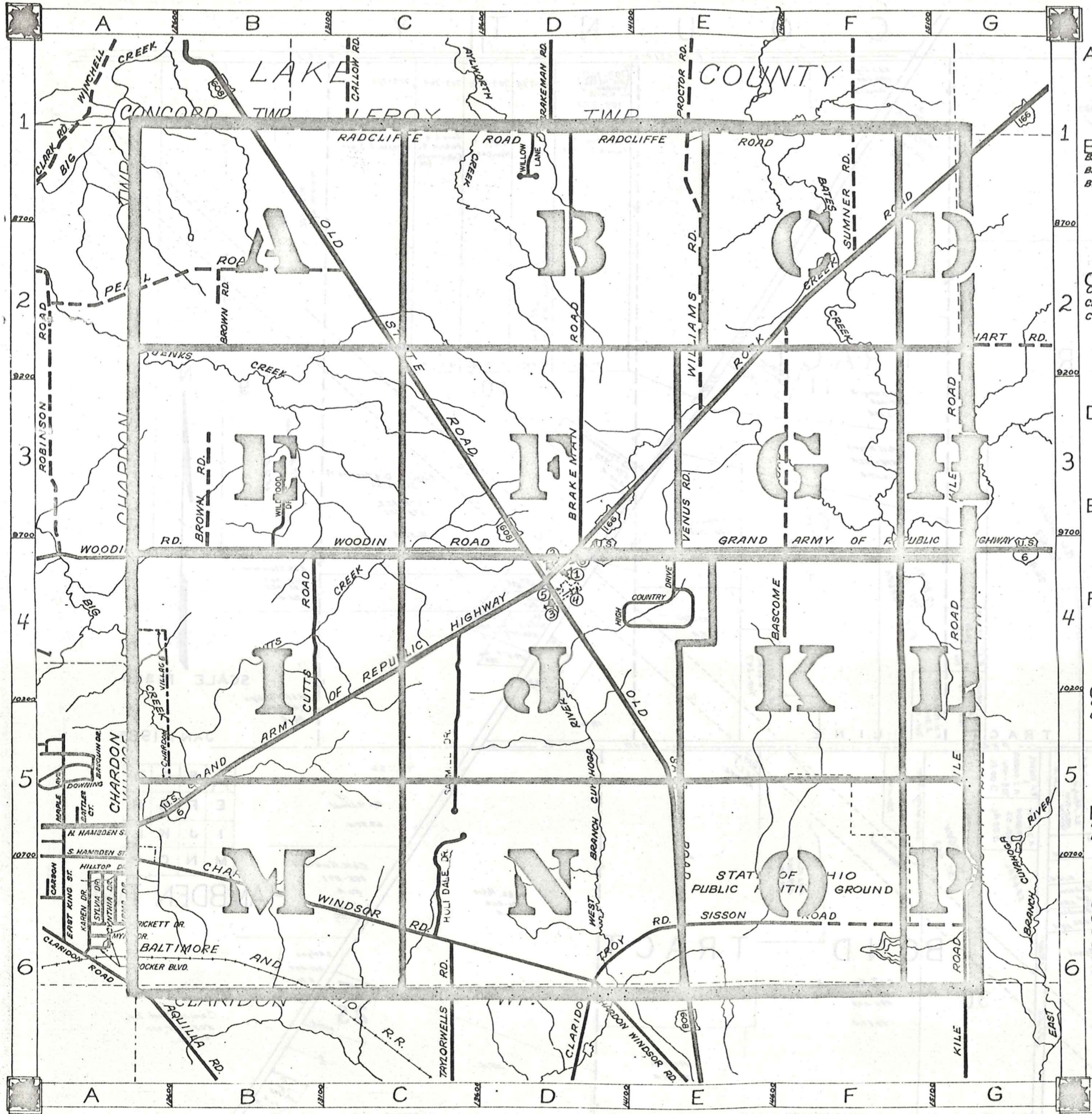


# ROAD INDEX



|   |  |
|---|--|
| I | RADCLIFFE RD. B1 F1  |
| J | BASCOMBE RD. F2, F4<br>BRAKEMAN RD. D1, D4<br>BROWN RD. B2, B4                                       |
| K | SAWMILL DR. C4 C5<br>SISSON RD. E6 G6<br>SUMNER RD. F1 F2<br>KILE RD. G2, G6                         |
| L | TAYLORWELLS RD. C6   |
| M |  |
| N | VENUS RD. E3, E4   |
| O | WILLIAMS RD. E1, E3<br>WOODIN RD. A4, D4<br>WILDWOOD DR. B3<br>WILLOW LANE D1<br>OLDSTATE RD. B1, E6 |
| P |  |
| Q |  |
| X | G.A.R. (U.S. 6) A5, G4<br>GRANT ST. A5   |
| Y | PEARL RD. A2, C2   |
| Z | HIGH COUNTRY DR. E4<br>HOLI-DALE DR. C6  |

- ① HAMB DEN ELEMENTARY SCHOOL
- ② HAMB DEN CONGREGATIONAL CH.
- ③ CHRISTIAN & MISSIONARY ALLIANCE CH.
- ④ HAMB DEN CEMETERY
- ⑤ HAMB DEN VOL. FIRE DEPT.
- ⑥ HAMB DEN TOWN HALL

## HAMB DEN TOWNSHIP

SCALE = 1" = 2000'

ROBERT E. PHILLIPS,  
GEAUGA COUNTY ENGINEER

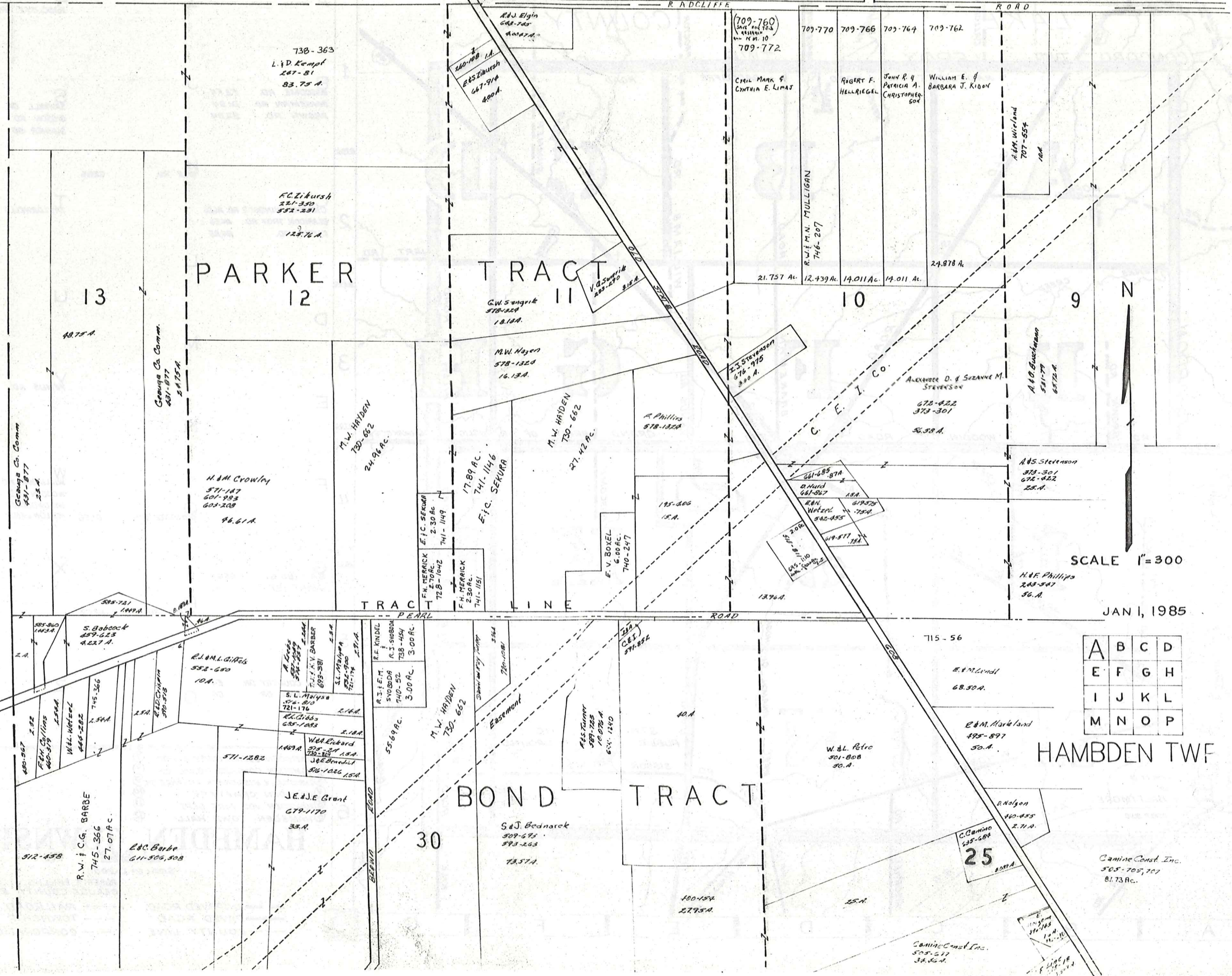
- UNPAVED ROAD
- == PAVED ROAD
- - - COUNTY LINE
- RAILROAD
- - - TOWNSHIP LINE
- - - CORPORATION LINE



L A K E C O U N T Y

P  
T  
N  
D  
O  
N  
A  
R  
D  
O  
N  
C  
H

R. ADCLIFFE ROAD



PARKER 12

TRACT II

10

9

TRACT LINE

BOND TRACT

HAMBLEN TWP

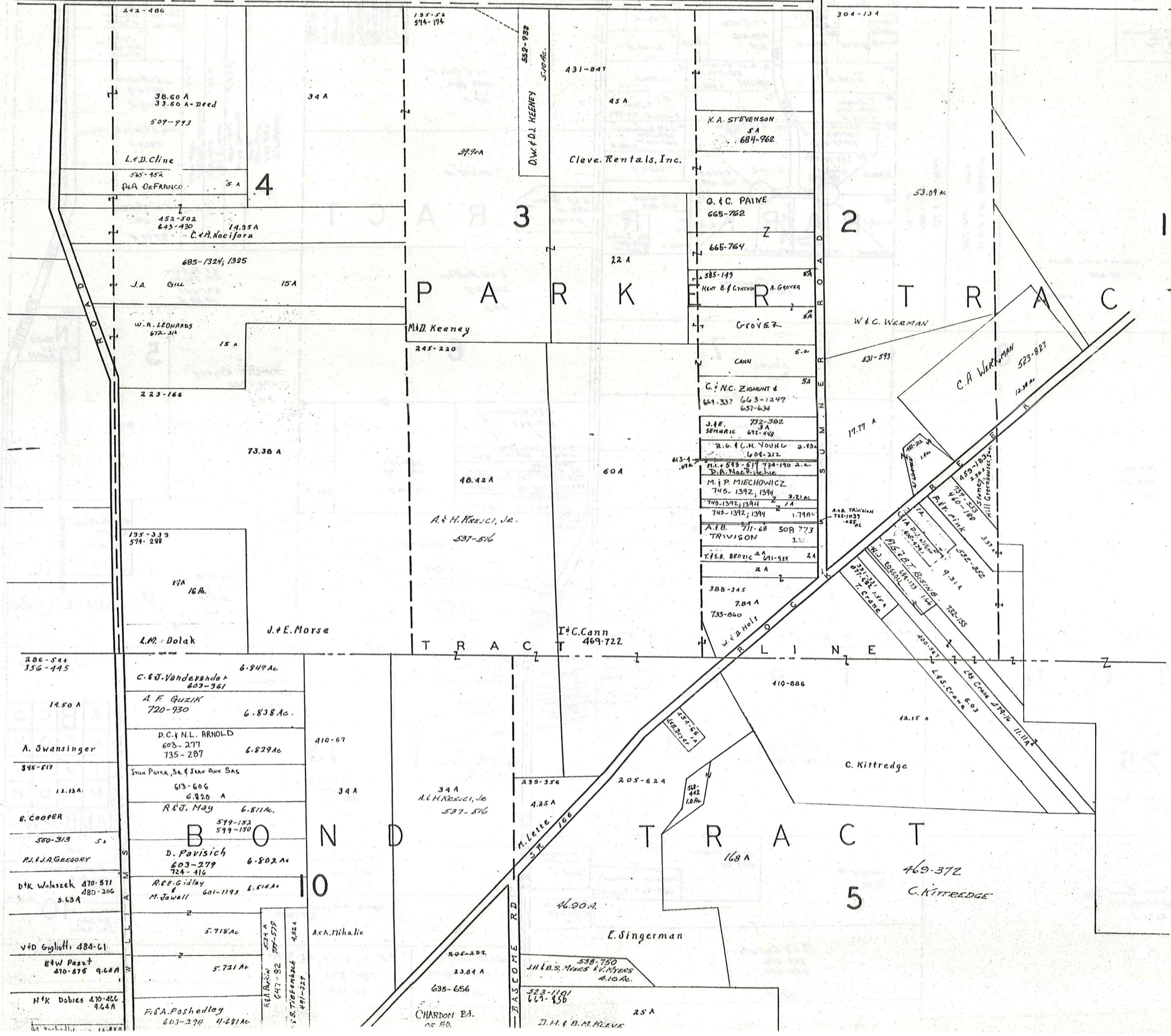
SCALE 1"=300

JAN 1, 1985

|   |   |   |   |
|---|---|---|---|
| A | B | C | D |
| E | F | G | H |
| I | J | K | L |
| M | N | O | P |



L A K E C O U N T Y



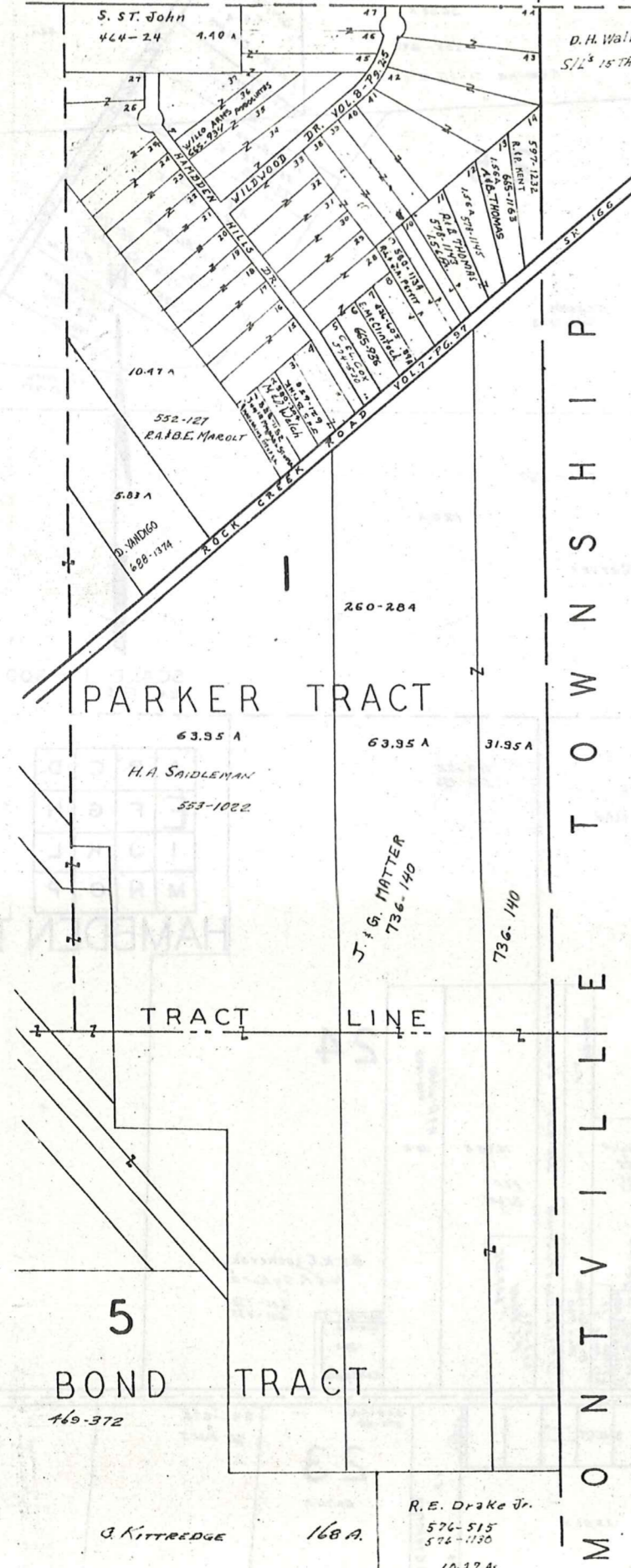
SCALE 1" = 300'  
JAN. 1, 1985

|   |   |   |   |
|---|---|---|---|
| A | B | C | D |
| E | F | G | H |
| I | J | K | L |
| M | N | O | P |

HAMB DEN TWP.

LAKE COUNTY

THOMPSON TWP.

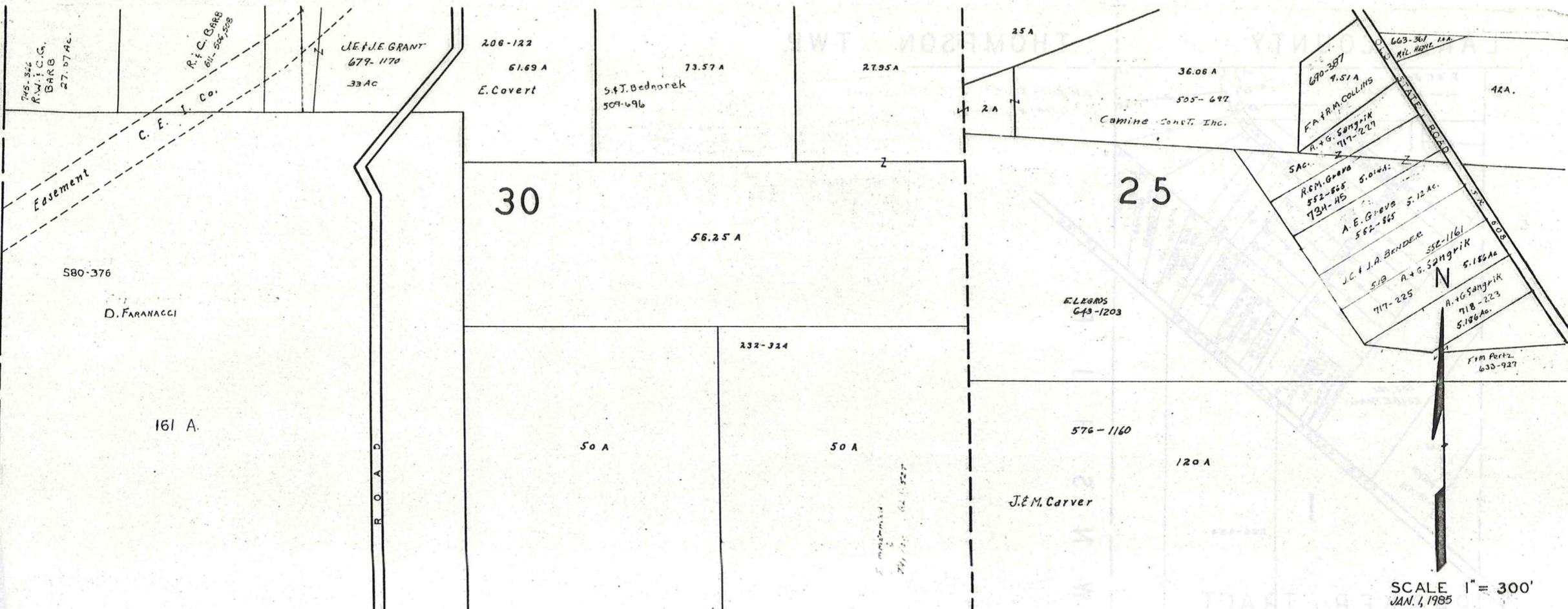


SCALE 1" = 300'  
 JAN. 1, 1985

|   |   |   |   |
|---|---|---|---|
| A | B | C | D |
| E | F | G | H |
| I | J | K | L |
| M | N | O | P |

HAMB DEN. TWP.

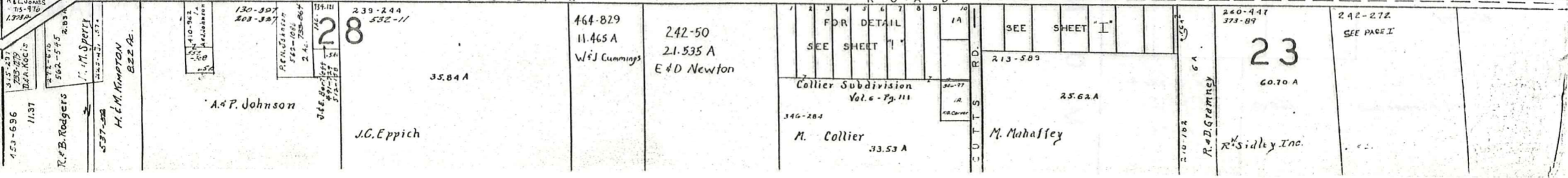
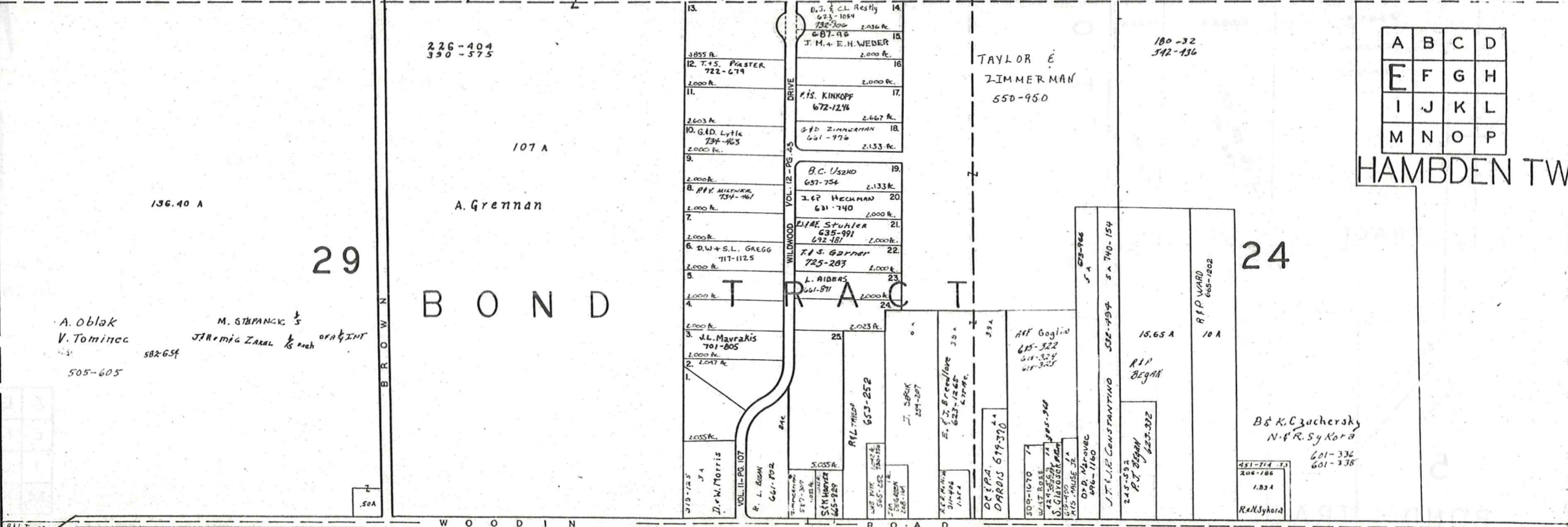
C H A R D O N T O W N S H I P

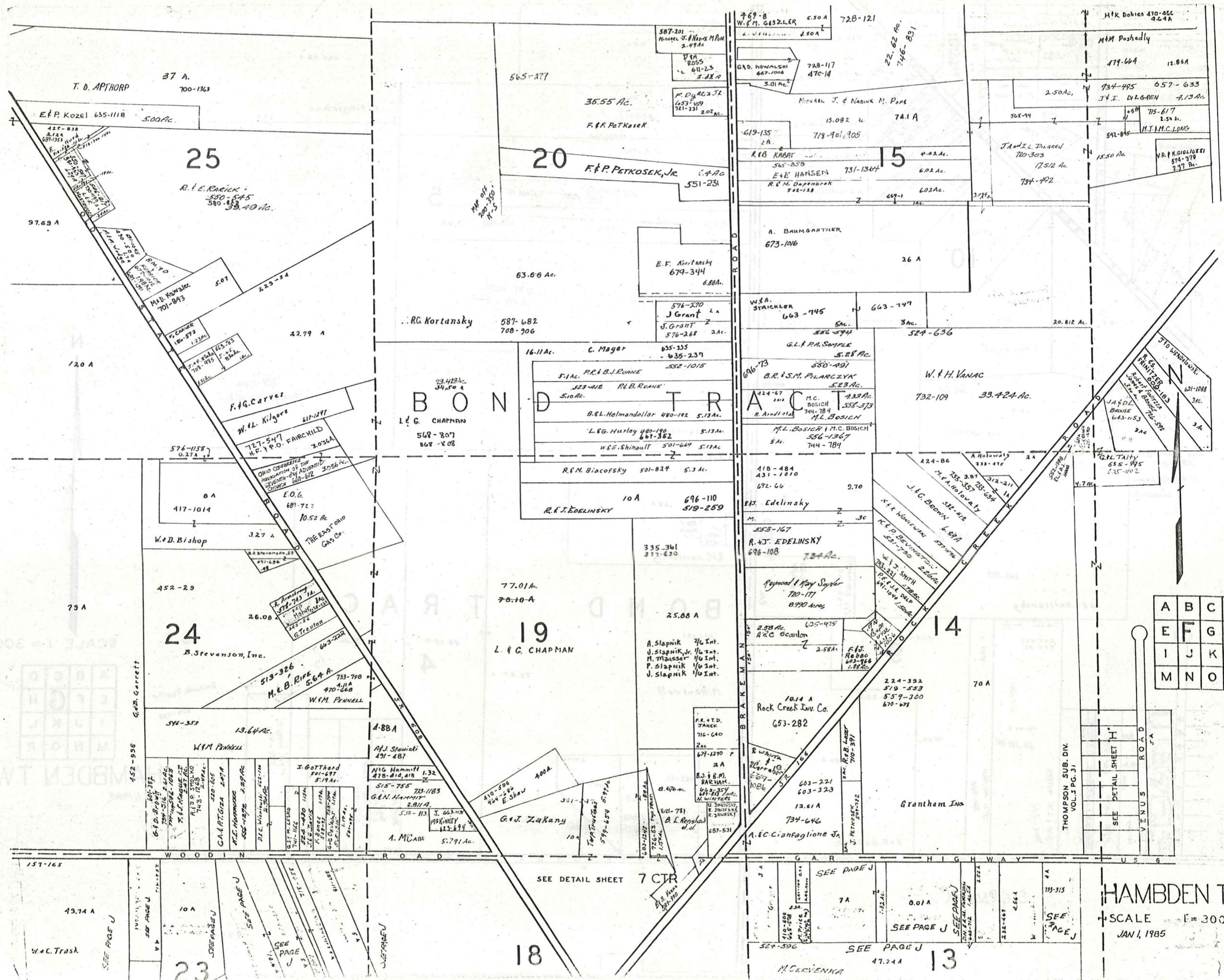


SCALE 1" = 300'  
JAN. 1, 1985

|   |   |   |   |
|---|---|---|---|
| A | B | C | D |
| E | F | G | H |
| I | J | K | L |
| M | N | O | P |

HAMB DEN TW





**B O N D T R A C T**

|   |   |   |   |
|---|---|---|---|
| A | B | C | D |
| E | F | G | H |
| I | J | K | L |
| M | N | O | P |

**HAMB DEN TWP**

SCALE [ = 300'  
JAN 1, 1985

SEE DETAIL SHEET 7 CTR

SEE PAGE J

SEE PAGE J

SEE PAGE J

SEE PAGE J

SEE PAGE J

SEE PAGE J

SEE PAGE J

SEE PAGE J

SEE PAGE J

SEE PAGE J

SEE PAGE J

SEE PAGE J

SEE PAGE J

SEE PAGE J

SEE PAGE J

SEE PAGE J

SEE PAGE J

SEE PAGE J

SEE PAGE J

SEE PAGE J

SEE PAGE J

SEE PAGE J

SEE PAGE J

SEE PAGE J

SEE PAGE J

SEE PAGE J

SEE PAGE J

SEE PAGE J

SEE PAGE J

SEE PAGE J

SEE PAGE J

SEE PAGE J

SEE PAGE J

SEE PAGE J

SEE PAGE J

SEE PAGE J

SEE PAGE J

SEE PAGE J

SEE PAGE J

SEE PAGE J

SEE PAGE J

SEE PAGE J

SEE PAGE J

SEE PAGE J

SEE PAGE J

SEE PAGE J

SEE PAGE J

SEE PAGE J

SEE PAGE J

SEE PAGE J

SEE PAGE J

SEE PAGE J

SEE PAGE J

SEE PAGE J

SEE PAGE J

SEE PAGE J

SEE PAGE J

SEE PAGE J

SEE PAGE J

SEE PAGE J

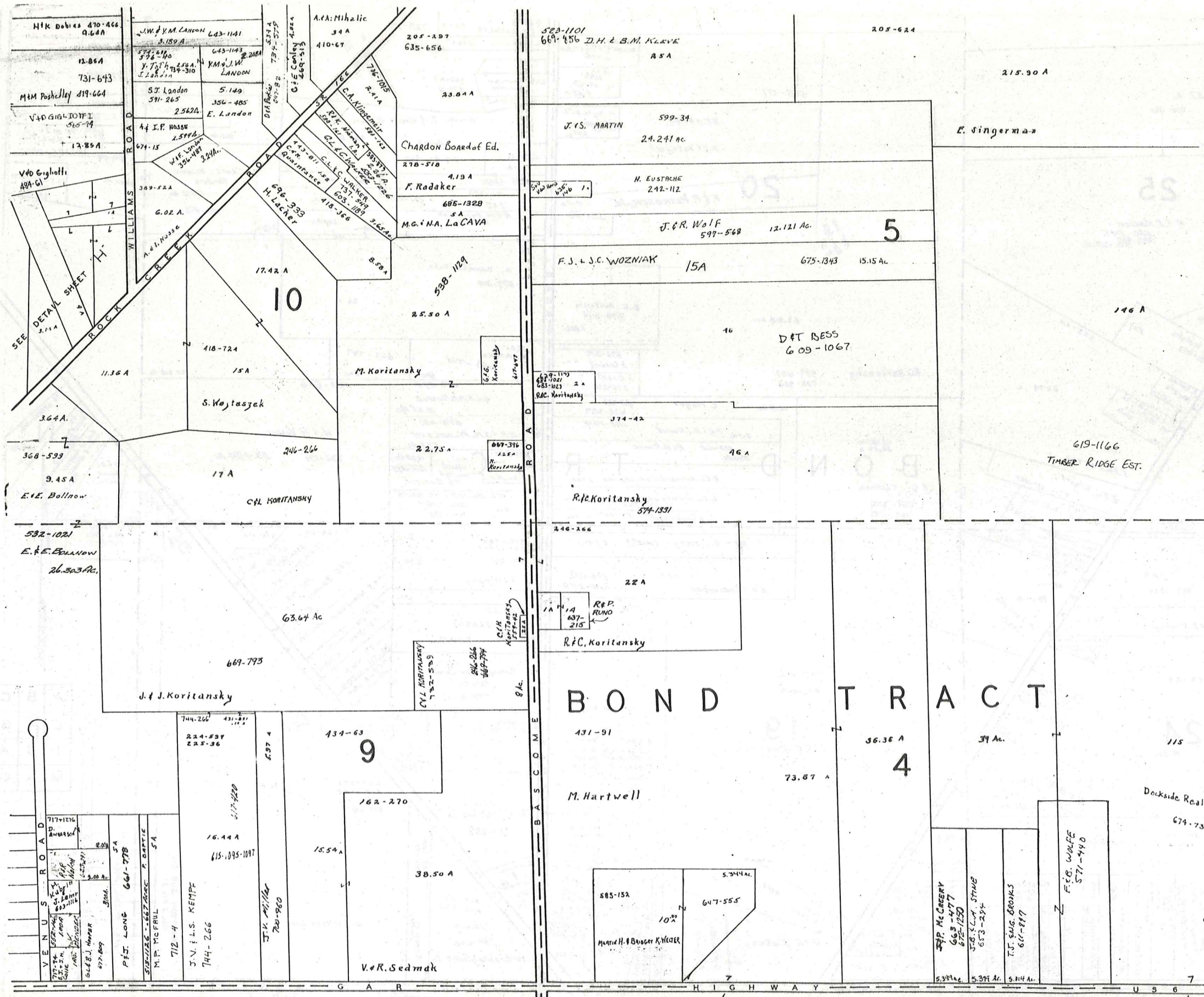
SEE PAGE J

SEE PAGE J

SEE PAGE J

SEE PAGE J

SEE PAGE J



SCALE 1" = 300'

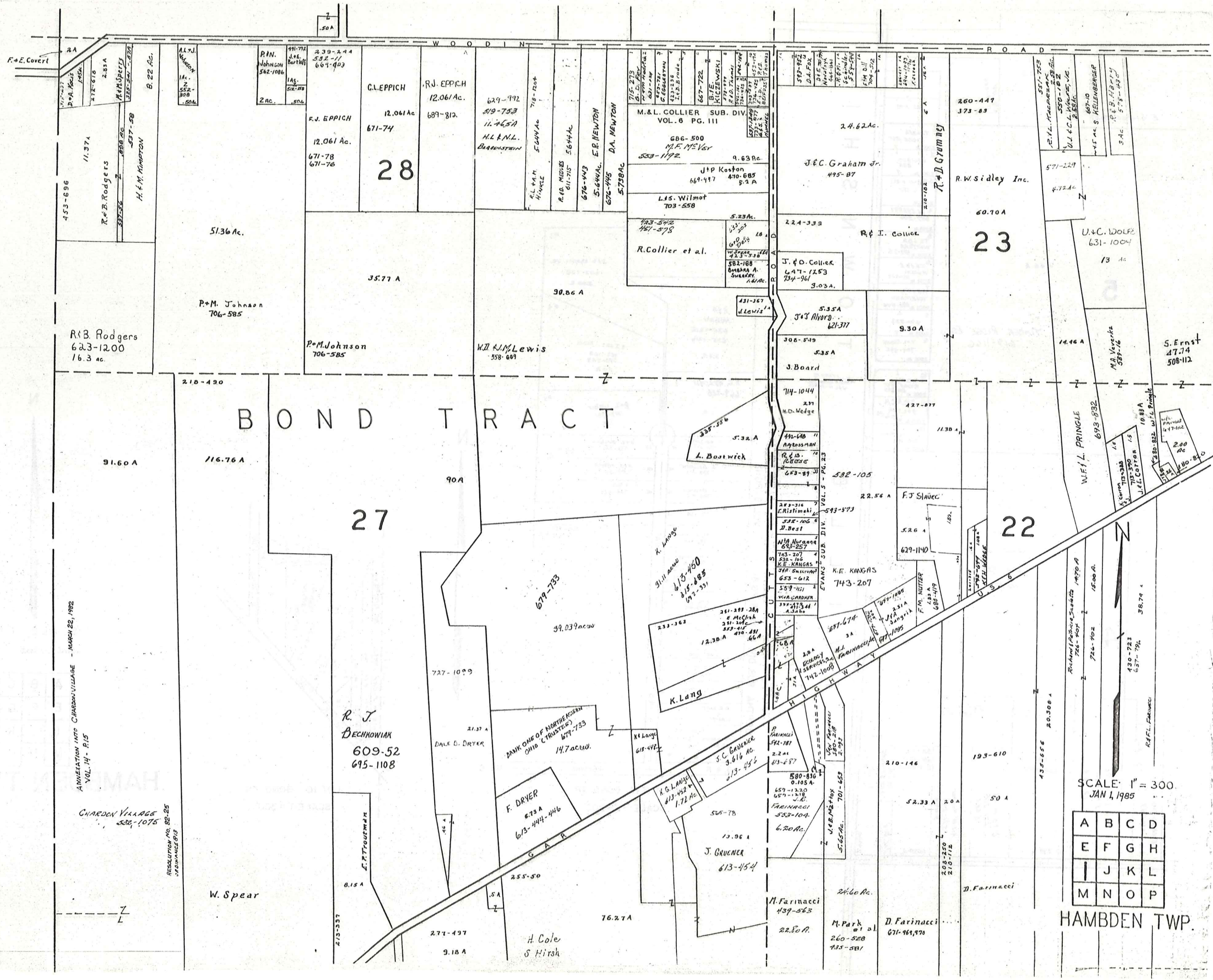
|   |   |   |   |
|---|---|---|---|
| A | B | C | D |
| E | F | G | H |
| I | J | K | L |
| M | N | O | P |

HAMB DEN TWP.  
JAN. 1, 1985

SEE PAGE "K"

170.0 A



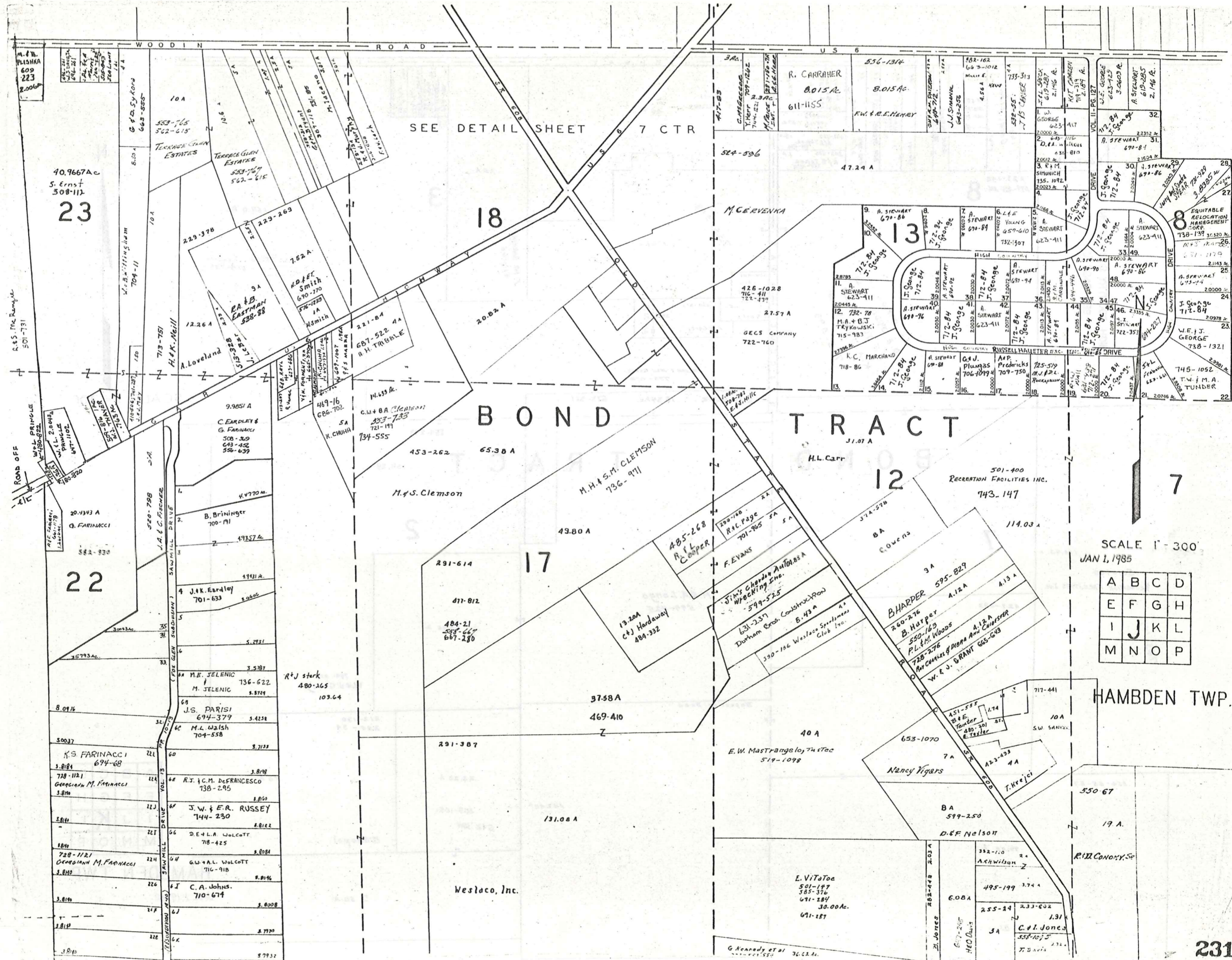


AMINATION INTO CHARDON VILLAGE - MARCH 22, 1982  
 VOL. 14 - P. 15  
 CHARDON VILLAGE  
 530-1075  
 RESOLUTION NO. 82-25  
 JANUARY 8, 1983

SCALE: 1" = 300'  
 JAN 4, 1985

|   |   |   |   |
|---|---|---|---|
| A | B | C | D |
| E | F | G | H |
| I | J | K | L |
| M | N | O | P |

HAMBLEN TWP.



M.F.N. PISHKA  
609  
223

40.9667 Ac  
S. Ernst  
308-112  
**23**

**22**

SEE DETAIL SHEET 7 CTR

**18**

**BOND TRACT**

**13**

**12**

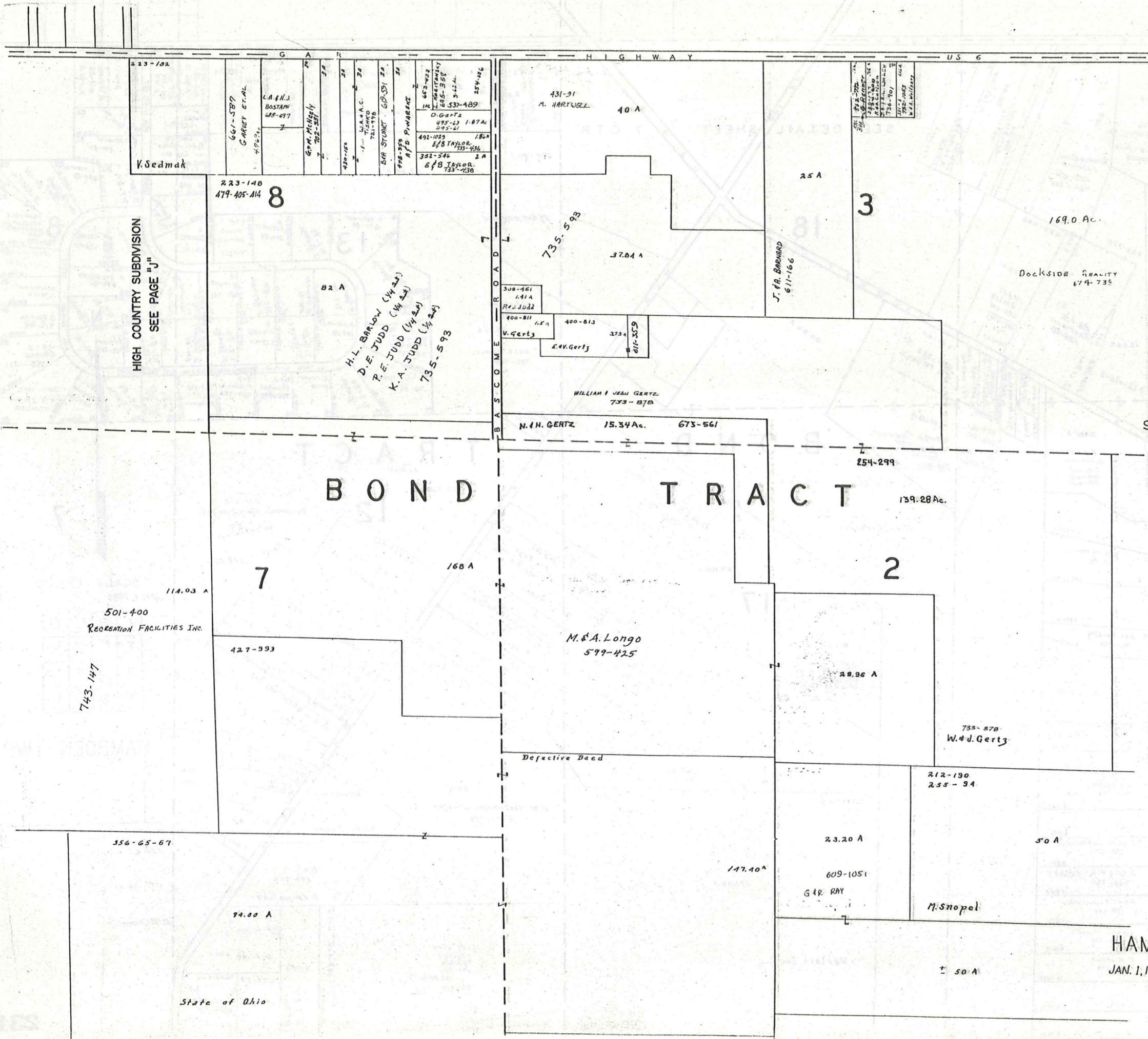
**17**

**7**

SCALE 1" = 300'  
JAN 1, 1985

|   |   |   |   |
|---|---|---|---|
| A | B | C | D |
| E | F | G | H |
| I | J | K | L |
| M | N | O | P |

HAMB DEN TWP.



HIGH COUNTRY SUBDIVISION  
SEE PAGE "J"

N  
SCALE 1" = 300

BOND TRACT

|   |   |   |   |
|---|---|---|---|
| A | B | C | D |
| E | F | G | H |
| I | J | K | L |
| M | N | O | P |

HAMB DEN TWP.  
JAN. 1, 1985

G A R HIGHWAY US 6

3

170.00 A.

Dockside Realty  
679-238

BOND TRACT

R O A D  
T O W N S H I P  
L I L L E  
M O N T V I L L E

647-433 5 A.

D.M. & P.M. CORWON

430-952 4.98 A.

R. & B. Grant

R. & D. SUSTERIC

657-261 4.98 A.

R & E CRONBIE II

657-263 4.98 A.

693-629

J. Gardini 4.98 Ac.

259-219

R. Kovaras

460-398 4.98 Ac.

M. & H. Tomosin

460-400 4.98 Ac.

DIC SHELIGN

621-111 4.98 Ac.

124-826 880-177

A. & M. Burnett

MARKS of ALICE L. HOOD

726-586 4.98 Ac.

CLYDE C. & CONNIE TOWNSEND

5.187 Ac. Ballash

704-895

712-737

730-510

3.027 Ac.

212-190

255-94

50 A.

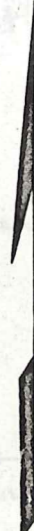
M. Snopel

G. & R. RAY

609-1051

50 A.

N

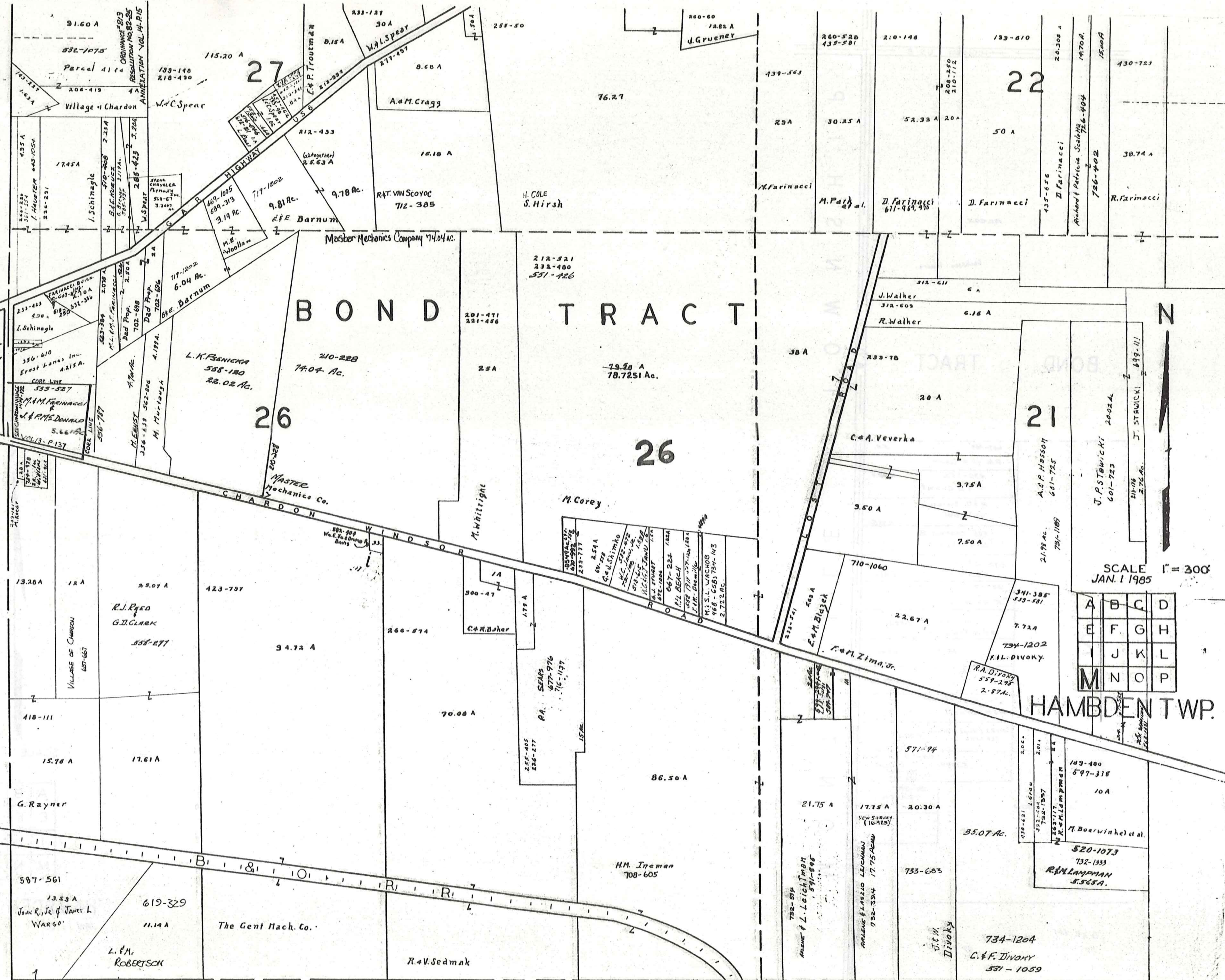


SCALE 1" = 300'

|   |   |   |   |
|---|---|---|---|
| A | B | C | D |
| E | F | G | H |
| I | J | K | L |
| M | N | O | P |

HAMB DEN TWP.  
JAN 1 1985

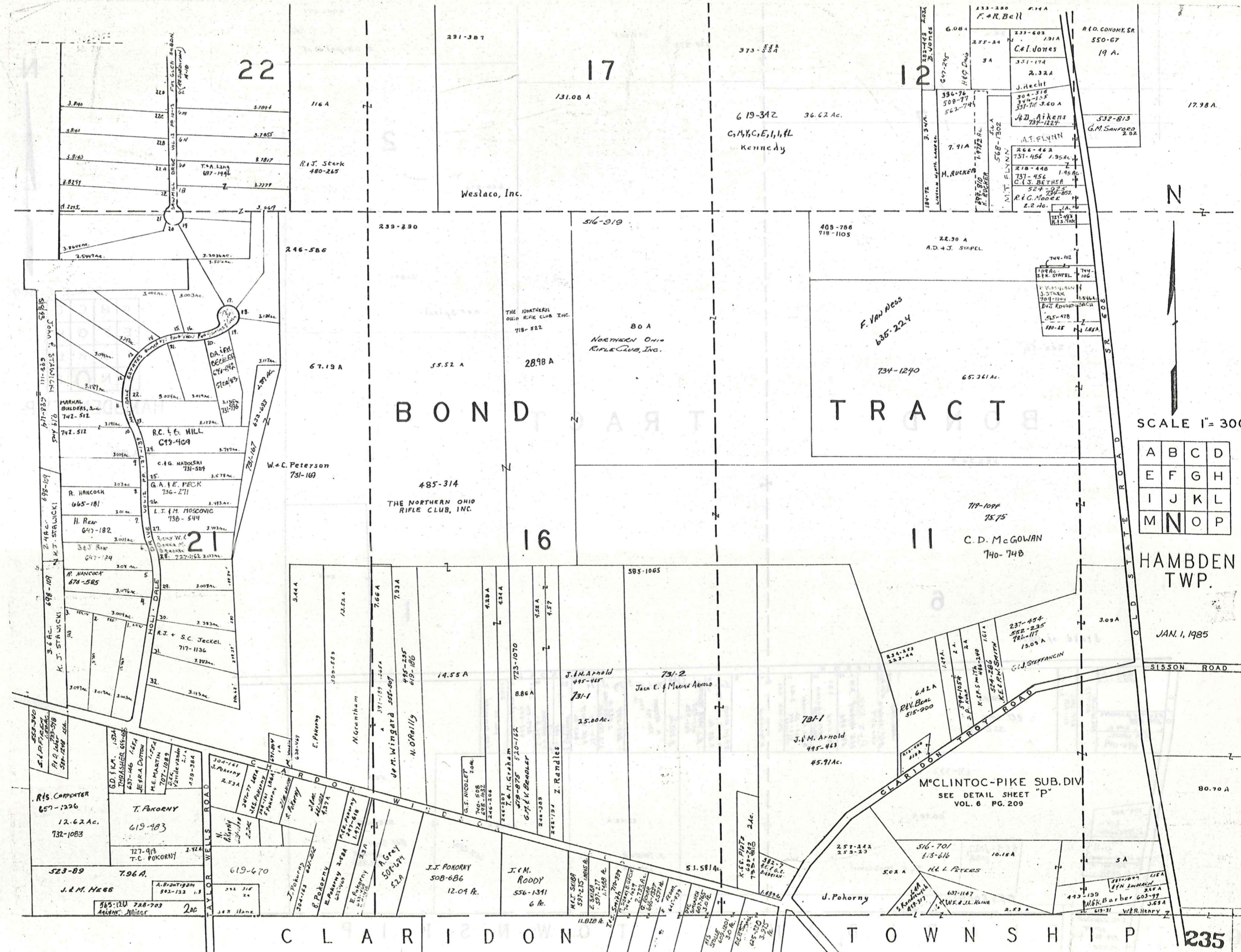
T O W N S H I P  
C H A R D O N  
T O W N S H I P



SCALE 1" = 300'  
JAN. 1 1985

|   |   |   |   |
|---|---|---|---|
| A | B | C | D |
| E | F | G | H |
| I | J | K | L |
| M | N | O | P |

HAMB DEN TWP.



**BOND TRACT**

SCALE 1" = 300'

|   |   |   |   |
|---|---|---|---|
| A | B | C | D |
| E | F | G | H |
| I | J | K | L |
| M | N | O | P |

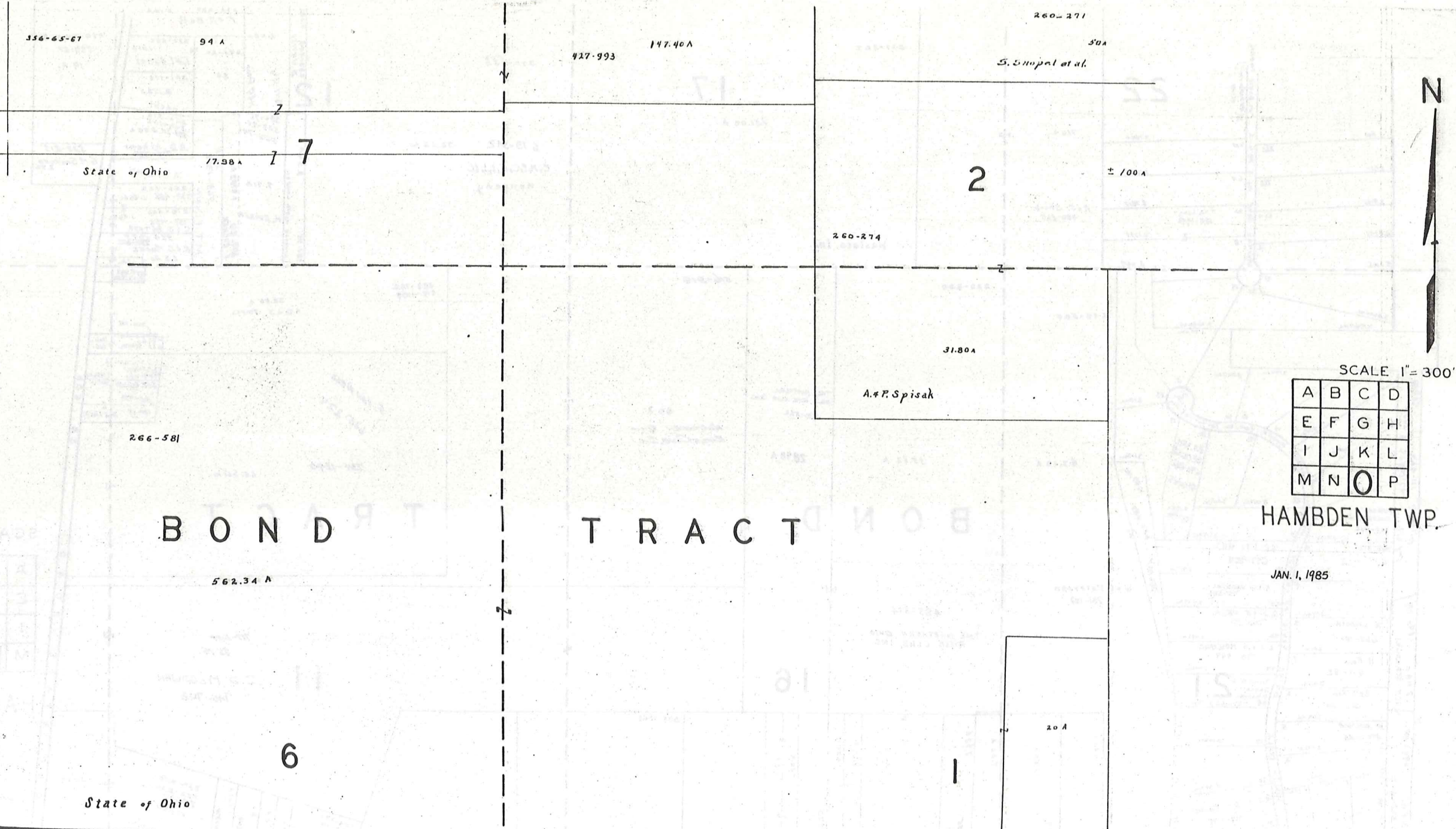
HAMB DEN TWP.

JAN. 1, 1985

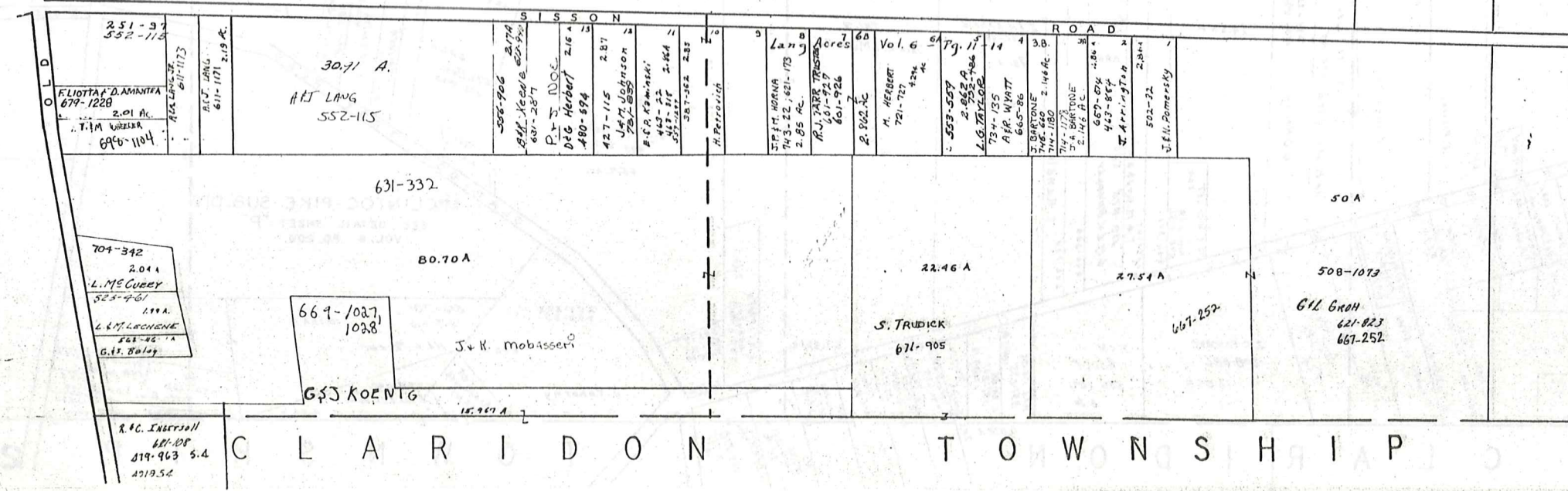
SISSON ROAD

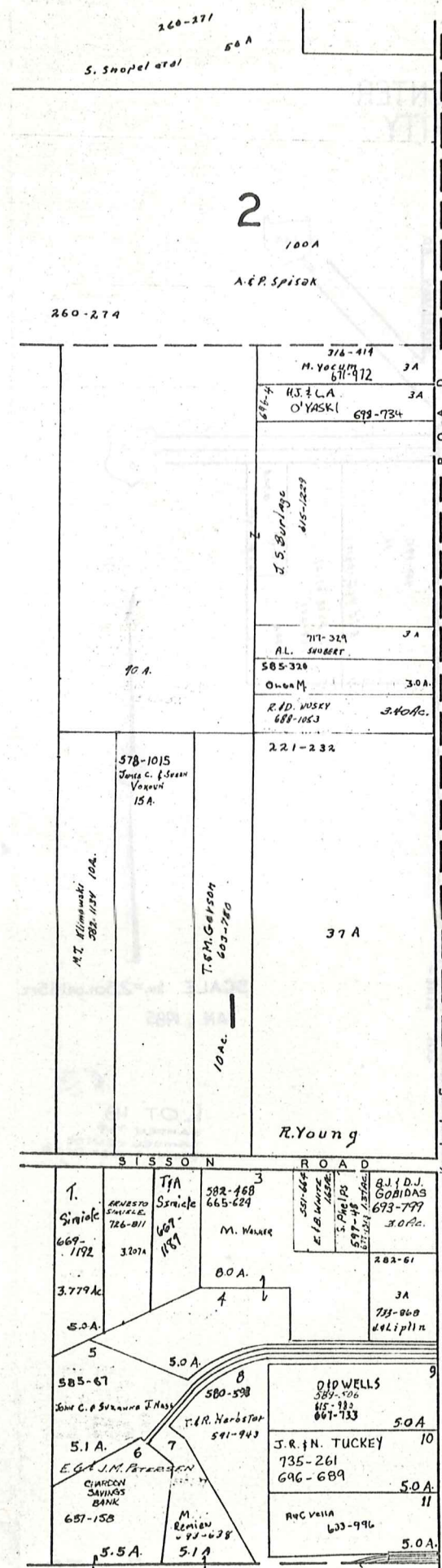
M<sup>c</sup>CLINTOC-PIKE SUB. DIV.  
SEE DETAIL SHEET "P"  
VOL. 6 PG. 209

CLARIDON TOWNSHIP 235



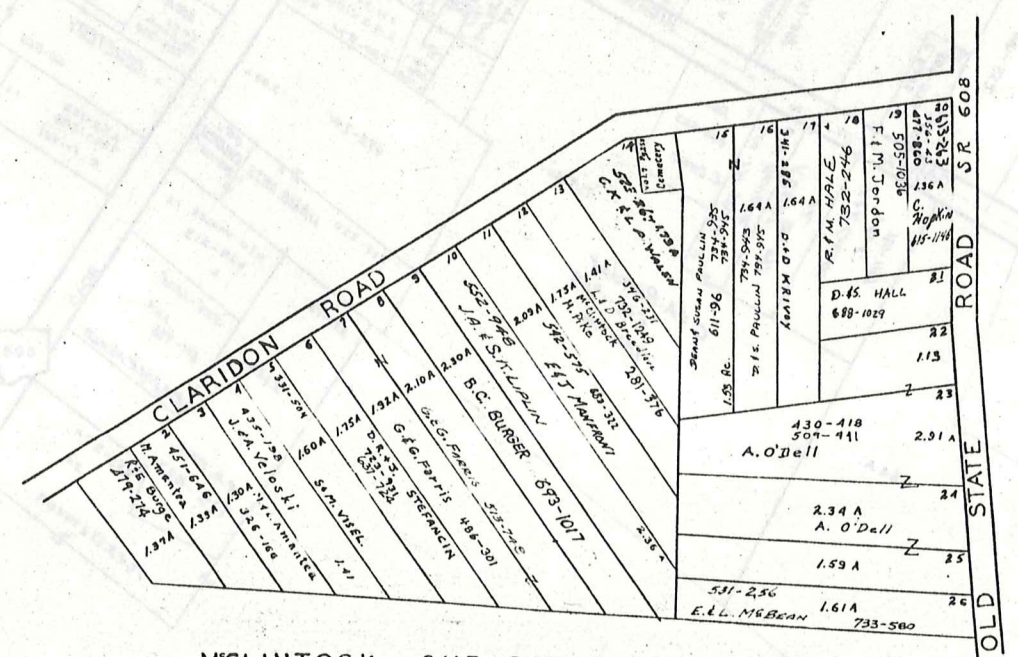
BOND TRACT





CLARIDON TOWNSHIP

MONTVILLE TOWNSHIP



McCLINTOCK SUB. DIV.  
VOL. 6 PG. 209  
LOT 6 & 11 BOND TR.  
Scale 1"=200'

SCALE 1" = 300'  
JAN. 1, 1985

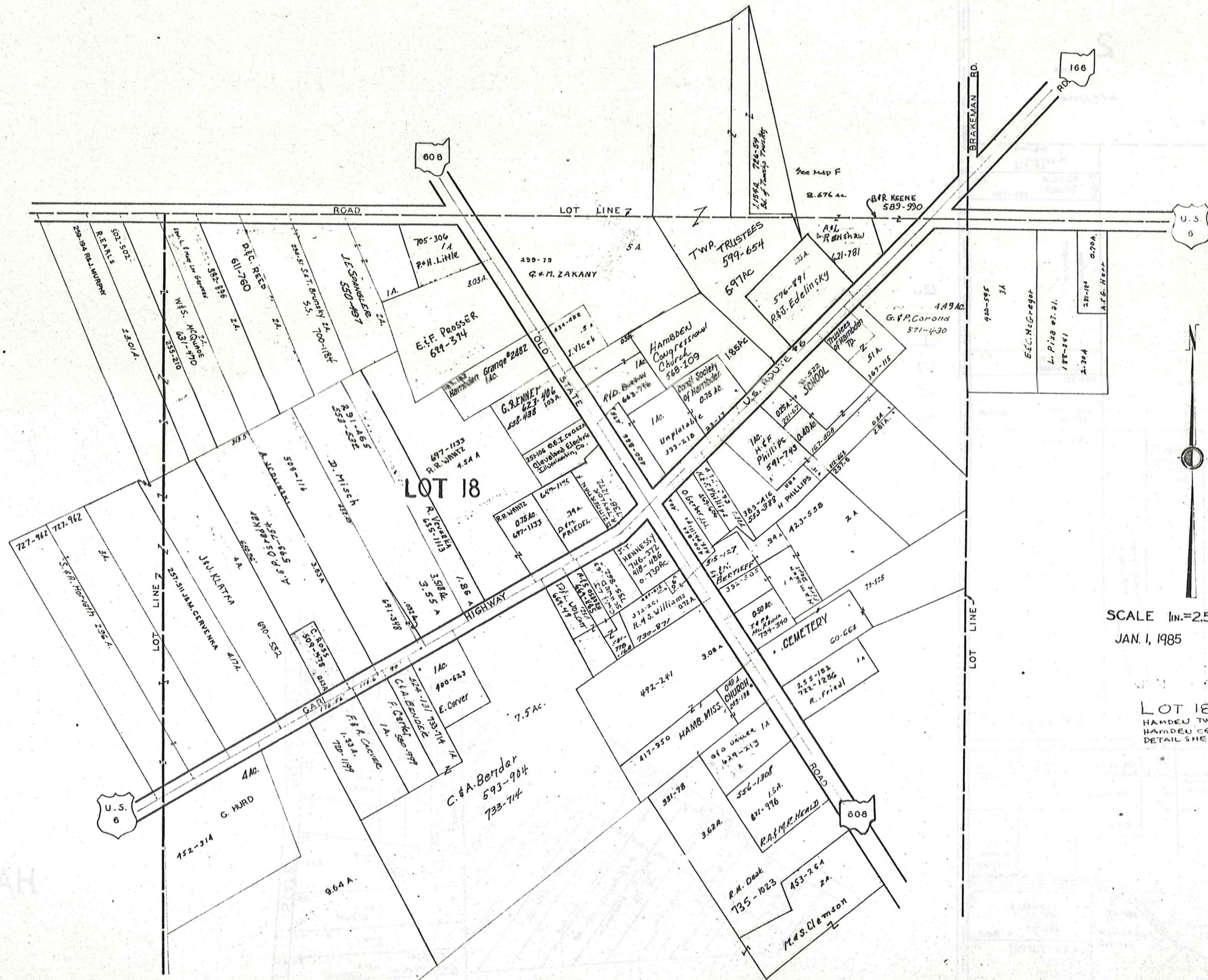
|   |   |   |   |
|---|---|---|---|
| A | B | C | D |
| E | F | G | H |
| I | J | K | L |
| M | N | O | P |

HAMBDEW TWP.

HAMB DEN CENTER AND VICINITY

HAMB DEN TP.

HAMB DEN CENTER AND VICINITY



SCALE 1in.=2.5ch. or 165ft.  
JAN. 1, 1985

LOT 18  
HAMB DEN TWP.  
HAMB DEN CENTER  
DETAIL SHEET 7CTR.



# Explanation and Use Sheet for Geauga County, Ohio

SAMPLE (PARTIAL) COUNTY INDEX MAP



- Township Boundary
- Township Name
- Village Boundary
- Village Name
- Tract Lot Number
- Street Name
- Acreage
- Deed Book & Page
- Owners Name
- Denotes Continous Ownership

SAMPLE (PARTIAL) MAP PAGE



- Map Page Number
- Village Name
- Village Boundary
- Township Name

SAMPLE (PARTIAL) MUNICIPALITY INDEX MAP



- Street Name
- Village Name
- Township Name

## USE OF THE MAP VOLUME

1. LOCATE THE GENERAL AREA OF INTEREST ON THE COUNTY INDEX MAP, ATLAS PAGE 'B', AND NOTE THE MUNICIPALITY NAME (TOWNSHIP OR VILLAGE).
2. REFER TO THE TABLE OF CONTENTS, ATLAS PAGE 'C', AND NOTE THE BEGINNING ATLAS PAGE NUMBER FOR THE MUNICIPALITY OF INTEREST.
3. TURN TO THE PAGE INDICATED. ON THIS PAGE WILL APPEAR AN INDEX MAP FOR THAT MUNICIPALITY.
4. LOCATE THE GENERAL AREA OF INTEREST AND NOTE THE MAP PAGE NUMBER. THIS MAY BE EITHER A LETTER OR A NUMBER.
5. MAP PAGES ARE IN ALPHABETICAL (OR NUMERICAL) SEQUENCE FOLLOWING THE MUNICIPALITY INDEX MAP. FOLLOW SEQUENCE TO THE MAP PAGE INDICATED.
6. LOCATE SPECIFIC PARCEL OF INTEREST AND NOTE THE DESIRED INFORMATION.

NOTE: ON SOME MAPS YOU MAY BE REFERRED TO A DETAIL SHEET SHOWING AN ENLARGEMENT OF THE AREA. THESE MAPS ARE FOUND AT THE END OF THE REGULAR MAP PAGES IN EACH MUNICIPALITY IN EITHER ALPHABETICAL OR NUMERICAL SEQUENCE.

NOTE: CHARDON VILLAGE HAS TITLE SHEETS. TO LOCATE OWNERS NAME, NOTE THE PARCEL NUMBER, REFER TO THE TITLE PAGE FOLLOWING THE MAP OF INTEREST, FOLLOW NUMERICAL SEQUENCE TO THE PARCEL NUMBER OF INTEREST AND NOTE THE DESIRED INFORMATION. IN ALL OTHER MUNICIPALITIES THE OWNERS NAME APPEARS ON THE MAP PAGE.

This book is the property of REAL ESTATE DATA, INC. and is distributed by REDI under a leasing arrangement requiring return to REDI upon termination of the lease. REDI reserves the right to reclaim this book if found in the possession of any firm or person where possession was obtained through any unauthorized source.